

# Positions in IBM's Semiconductor Research, Development and Production Facility



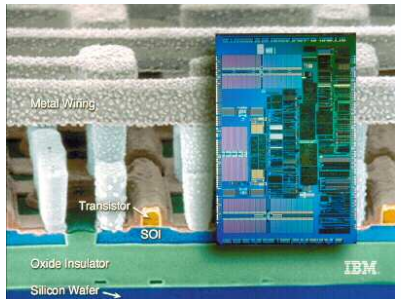
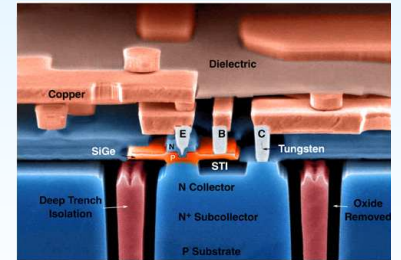
IBM's 200mm Specialty Foundry is looking for Exceptional Talent for its Semiconductor Research, Development, and Production Center in Burlington Vermont. "Be a part of an exciting world-wide team developing leading-edge silicon solutions."

## Who Are We?

- ❑ We are IBM's Semiconductor Development Group developing semiconductors that you use every day (see bottom).
- ❑ We Pioneered SiGe, SOI, Copper, etc.

## What do we do?

- ✓ Advanced RF Technologies in Bulk, SOI & SiGe Technology
  - ❑ Develop new SiGe and RF CMOS Technologies
  - ❑ Develop High Voltage CMOS and BCD Technologies for Smart Power
  - ❑ Develop Memory Technologies: SRAM, eNVRAM, eDRAM, FeRAM
  - ❑ Develop Image Sensors and MEMS
  - ❑ Develop SOI technologies
  - ❑ Includes Models, PDKs, Libraries, Test and packaging too!



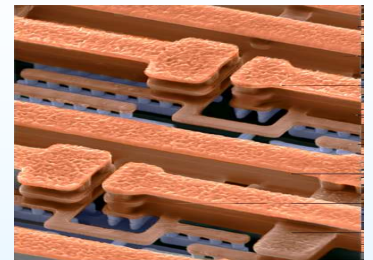
## Skills

IBM is looking for college graduates and experienced professionals with solid engineering skills

- ✓ Electrical, Computer, or Chemical Engineering (BS, MS, Ph.D.)
- ✓ Material Science, Physics, and Chemistry (MS, Ph.D.)
- ✓ Experienced Professionals in Semiconductor Manufacturing

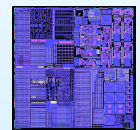
## Opportunities?

- ✓ Manufacturing Engineering: We are looking for excellent people interested in developing and maintaining leading edge processes in Lithography 0.35µm-90nm, RIE, Ion Implant, CMP, Metrics, Epitaxy, CVD, Hot Process, Wet Chemical, Interconnects, Inline test, and Functional Test



## Who to Contact?

- ✓ Karen Abrahamovich, 1-802-769-9711, kabraham@us.ibm.com



## Our Chips are found in all of these products

<p>Game platforms</p>	<p>Base stations / Networking</p>	<p>Test &amp; Measurement</p>	<p>Digital Video Cameras</p>	<p>PMPs</p>				
<p>MIDs</p>	<p>Smartphones</p>	<p>Cell phones</p>	<p>WLAN Access Point</p>	<p>Laptops</p>	<p>GPS</p>	<p>Satellite</p>	<p>Optical Transceivers</p>	<p>Digital Cameras</p>